

MC400

Universal CNC
turning machine



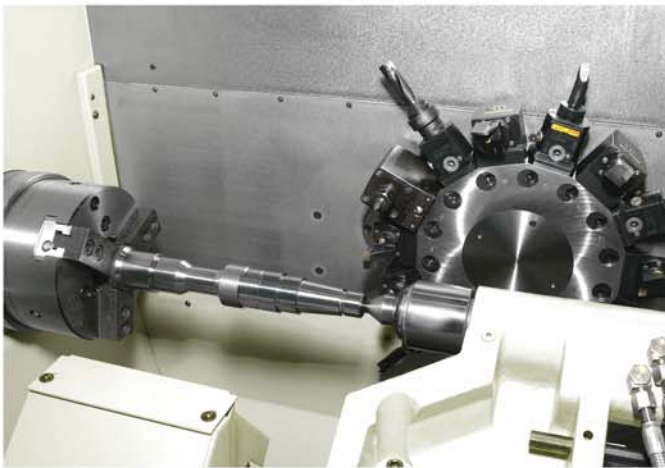
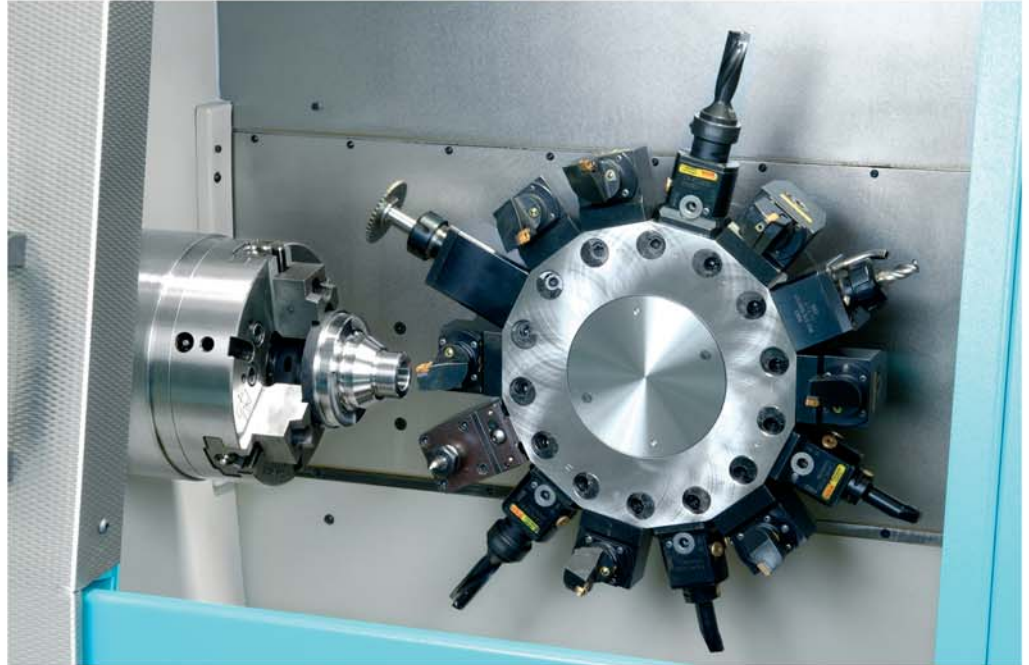
Universal, for bar machining and machining with chuck

Varied machining options:

- 65 mm bar capacity
- Chucks up to 250 mm diameter
- Turning length 585 mm
- 14 station tool turret
- Powerful tool drive

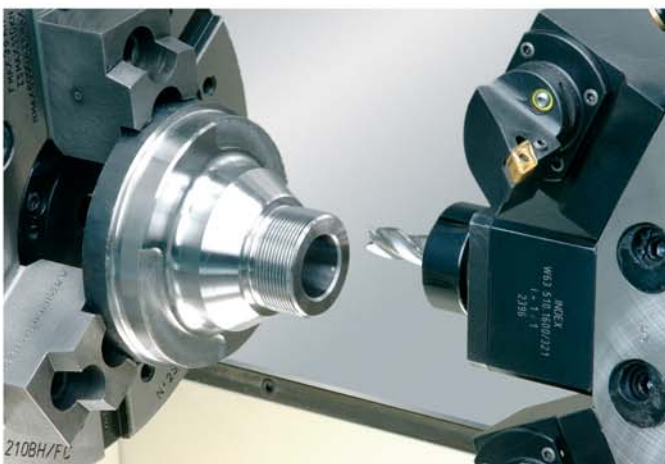
Ease of setup - open working area

- Radial turret, best for machining with chuck
- Best accessibility
- Free chip fall



Complete machining, in case of bar, shaft or chuck work:

- Hydraulic tailstock, in case of need pivoted
- 7 driven tool stations

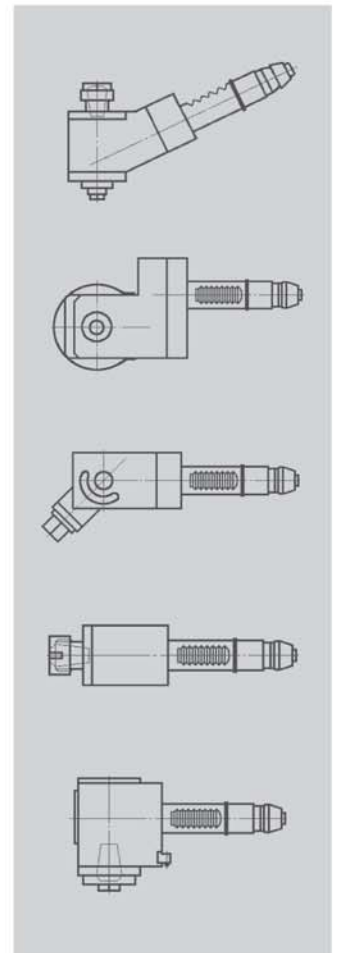


Tool holder, as versatile as the range of parts:

- Extremely stable VDI 30-system

Tapping, milling or drilling:

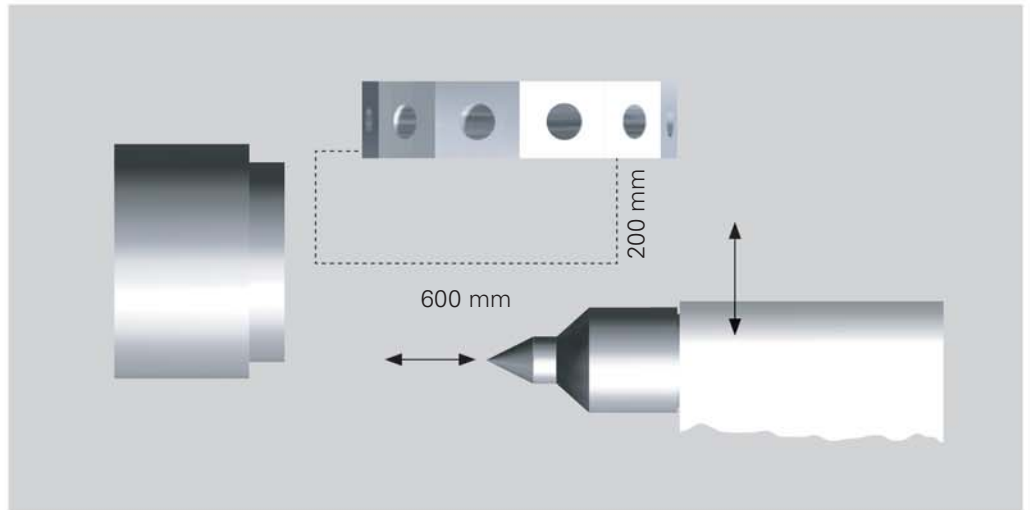
- All tool holders feature different speed increasing or speed decreasing ratios



Optimal working area

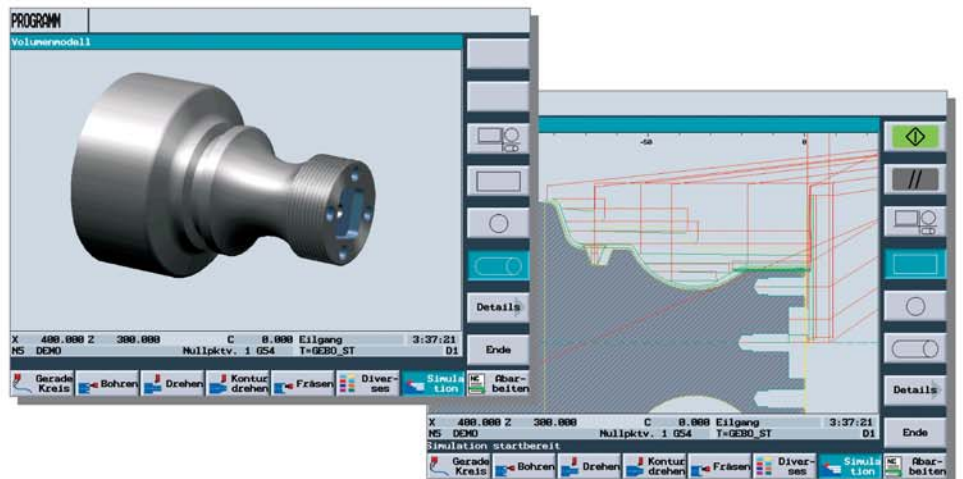
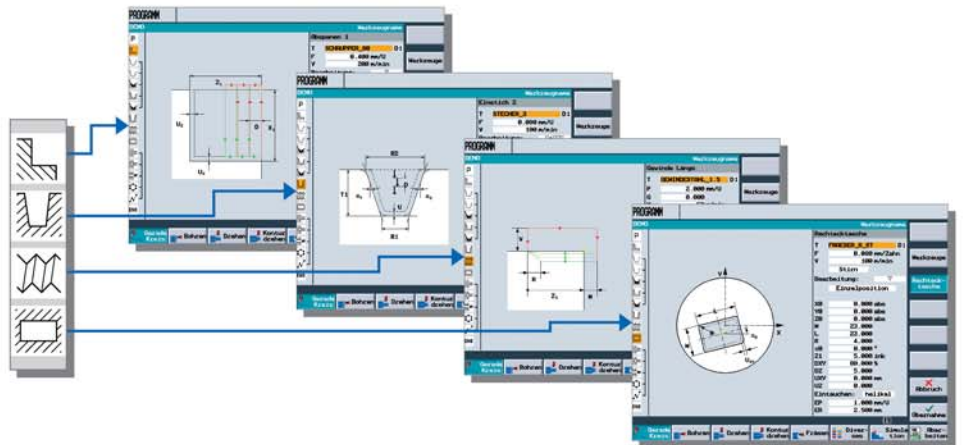
Your advantage:

- Tailstock swivels in X direction out of the axial working area



MC400 and ShopTurn - the technology package for „universal turning“

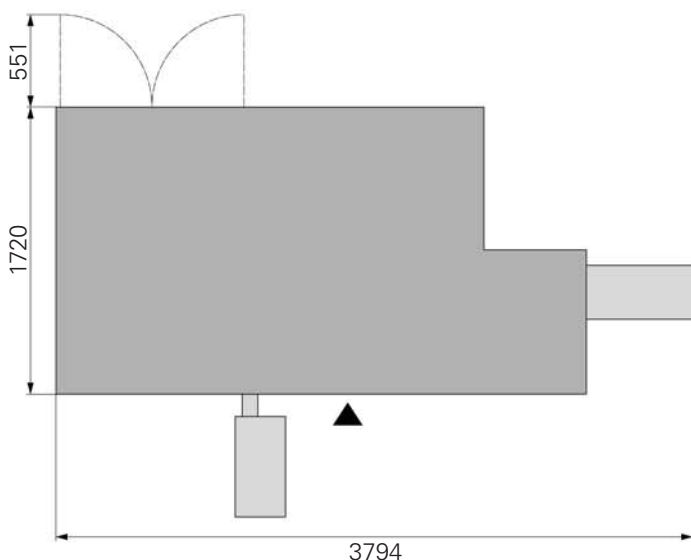
- Easy to handle - by integrated turning, milling and drilling cycles
- Flexible - as graphic, DIN/ISO and technology are freely programmable
- Operating manual is unnecessary - expected input is dynamically prompted
- Most safety at the start - 3D simulation shows view with real tools



Technical Data

Working range		MC400	
Turning diameter nom.	mm (inch)	275 (10.8)	
Swing diameter max.	mm (inch)	470 (18.5)	
Turning length max.	mm (inch)	585 (23)	
Main spindle			
Bar capacity	mm (inch)	42 (1.7)	65 (2.6)
Spindle head	mm (inch)	140 (5.5)	185 (7.3)
Nominal chuck size	mm (inch)	175 / 200 (6.9 / 7.9) 175 / 200 / 250 (6.9 / 7.9 / 9.8)	
Speed	rpm	6000	5000
Power at 100% / 60%	kW (hp)	20 / 25 (27 / 33.5)	
Torque at 100% / 60%	Nm (ft lbs)	137 / 172 (101 / 127)	
C axis	degrees	0,001	0,001
Compound slide			
		X	Z
Slide travel	mm (inch)	200 (7.9)	600 (23.6)
Rapid traverse	m (inch) / min	30 (1192)	30 (1192)
Feed force at 100% / 25%	N	3000/5500	8700/12500
Turret			
Number of stations		14	
Tool system DIN 69880		30 x 55	
Clamp holder	mm (inch)	20 x 20 (0.8 x 0.8)	
Indexing time for 1 station	s	1,0	
Indexing time for any further station	s	0,3	
Tool drive			
Number of stations		7	
Speed	rpm	4500	
Power at 100% / 25%	kW (hp)	3,4 / 7,5 (4.6 / 10)	
Torque at 100% / 25%	Nm (ft lbs)	8 / 20 (6 / 15)	
Tailstock			
Quill stroke	mm (inch)	60 (2.4)	
Quill thrust	N	7500	
Taper		SK30	
Coolant supply			
Coolant pressure	bar (psi)	5 (72)	
Pump capacity	l / min	60	
Container capacity	l (gal)	ca. 200 (52.8)	
Hinge-type chip conveyor			
Discharge height	mm (inch)	840 (33.1)	
Dimensions, weights and connecting power with max. configuration			
L x W x H	mm (inch)	3794 x 1720 x 1900 (149.4 x 67.7 x 74.8)	
Switchgear cabinet door	mm (inch)	551 (21.7)	
Weight	approx. kg (lbs)	4500 (9921)	
Connecting power		38 kW, 40 kVA, 80 A, 400 V, 50 / 60 Hz	
Control		(based on Siemens 810D)	

MC400/02.4473-10.06 AD Printed in Germany Subject to change without prior notice



INDEX-Werke GmbH & Co. KG
Hahn & Tessky
 Plochinger Straße 92
 73730 Esslingen, Germany
 Tel. +49 (711) 3191-0
 Fax +49 (711) 3191-587
 www.index-werke.de

INDEX Corporation
 14700 North Point Boulevard
 Noblesville, IN 46060, USA
 Tel. +1 (317) 770-6300
 Fax +1 (317) 770-3166
 www.index-usa.com