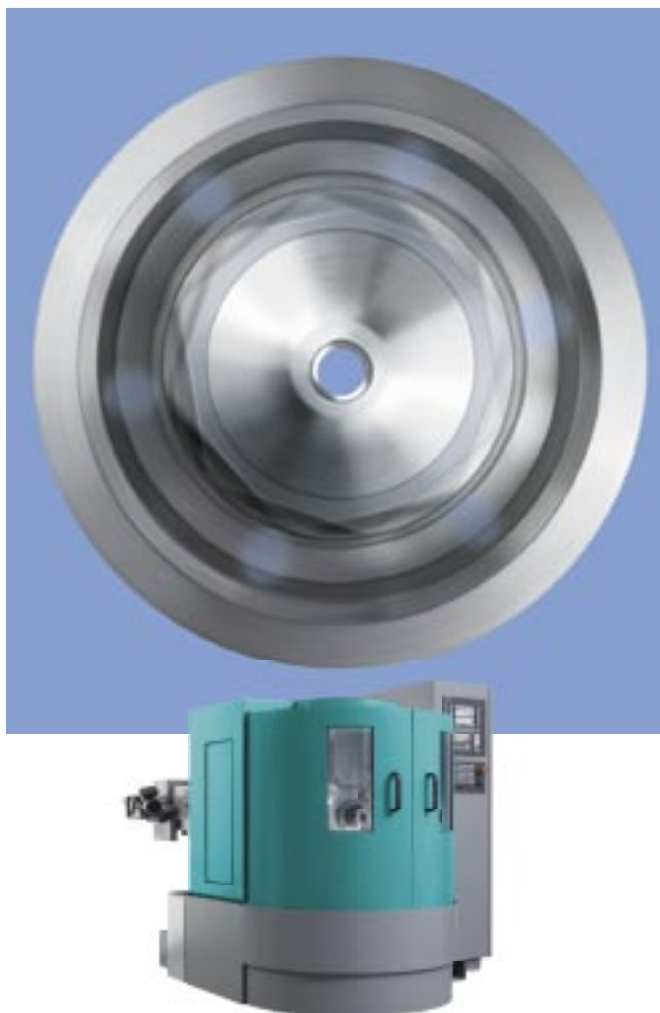


**SpeedLine
A100
A200**

Production turning machines



Simply faster production

The economic production of workpieces of easy to medium complexity is the strength of the INDEX A100 and A200. The single-spindle

turning machines open at the front are distinguished by high speed and easy setup. Their clearly structured design with up to four tool

carriers allows simultaneous use of several tools and provides optimum chip fall.



Just experience productivity



Fast

- Powerful motor spindles of 42 mm (A100), 65 mm or 90 mm (A200) in bar capacity
- Synchronous machining with up to four tool carriers
- Short chip-to-chip times
- Short travels - but large-sized work area

Simply

- Fast setup through optimum accessibility
- Clearly structured work area simplifies setup of the machine
- Programming by means of the proven Siemens 840D solutionline

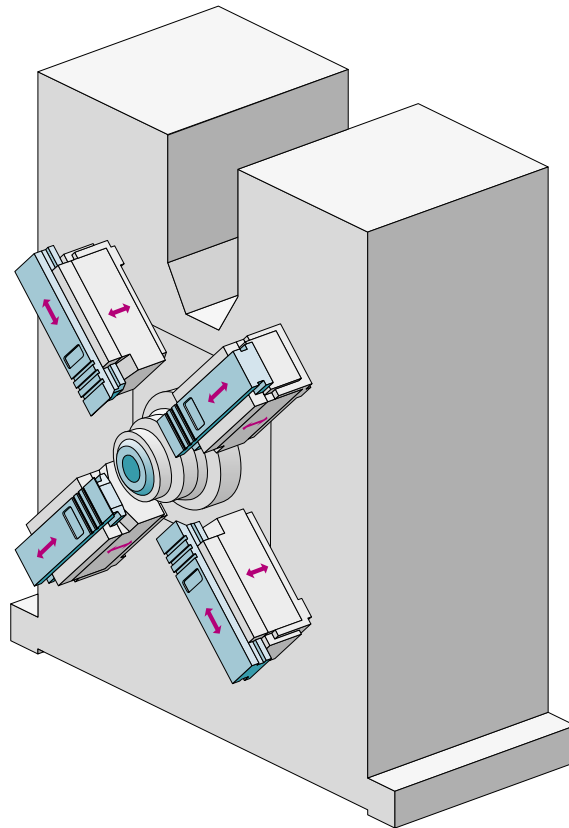
Perfect combination: simple setup - fast production

The INDEX A100 and A200 production turning machines should be part of every turning shop. Designed for efficient machining of chuck

work and parts turned from bar stock, they are setting standards in productivity and ease of setup. The optionally available synchronous spindle

allows backworking of the workpiece. Thus, parts turned from bar stock of simple and medium complexity can now be machined economically

and competitively.



Fast and comfortable setup

The ergonomic design of the INDEX A100 and A200 open at the front allows optimum access to the work area. The tools and clamping devices are easy to reach, and the proven slide concept makes for easy setup. This reduces the downtimes, thus providing an additional gain in productivity in your production.

Safe and dynamic production

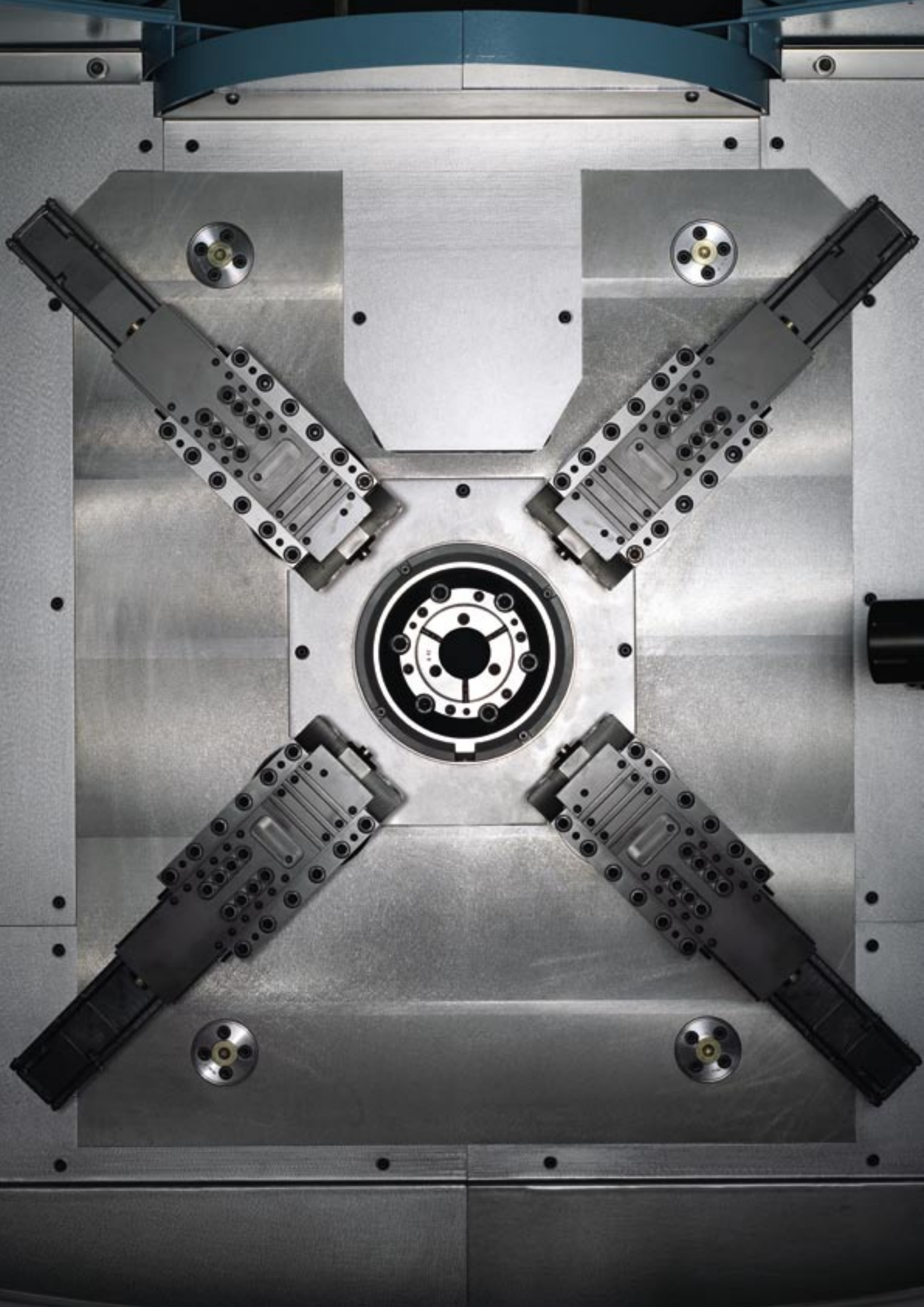
A symmetrical design containing up to four tool carriers and an upright machine bed provide optimum conditions in series production, even with large piece quantities. The powerful motor spindles of 42 mm (A100), 65 mm or 90 mm (A200) in bar capacity produce a high chip volume, and the proven slide concept of the tool carriers ensures high precision.

Compact installation area, maximum performance

The INDEX A100 and A200 have allowed us to develop a series that, despite its high performance, has extremely compact outer dimensions. You save valuable and scarce production area and thus produce even more economically.

Siemens 840D sl - The ideal control

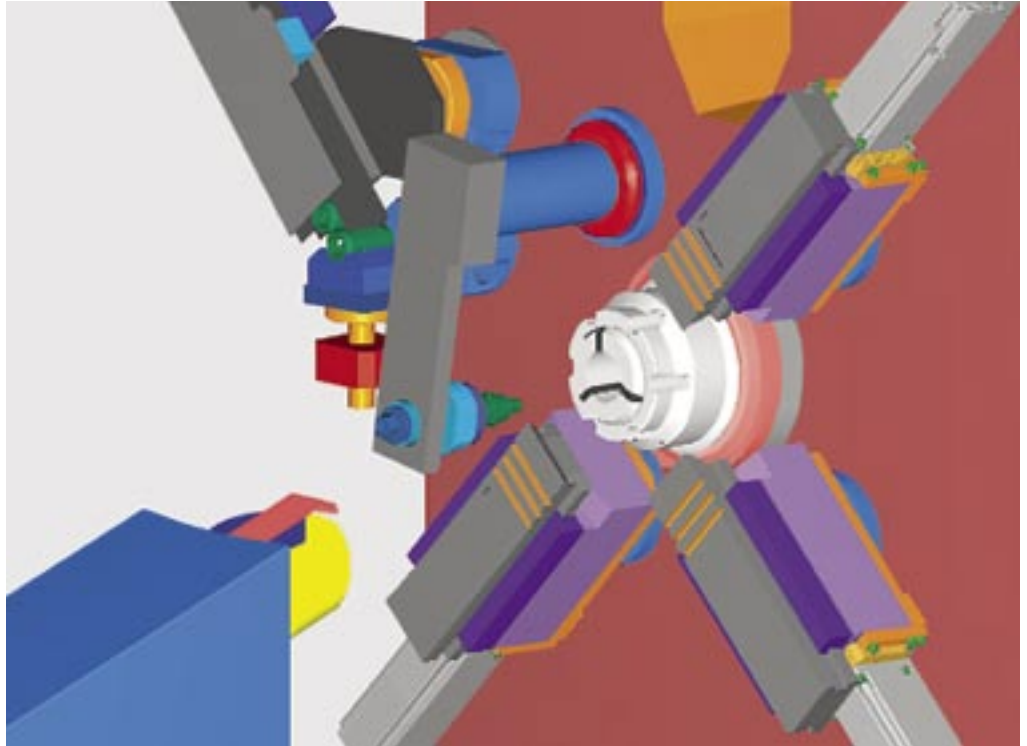
The fast and reliable Siemens 840D sl CNC control convinces with its clearly structured menu guidance, thus increasing the operating comfort. Short cycle times and many macros offer additional advantages.



Economic production, no matter whether magazinging...

Intelligent handling system

An optionally integratable loading and unloading system allows fast tool change operations. This allows pre-formed or pre-machined workpieces to be machined without any additional investments into complicated handling systems. Turned parts having a max. diameter of 90 mm can be fed automatically.



... or bar work

Efficient production of parts turned from bar work

For material diameters of up to 90 mm, the machining of bar stock is another economic alternative. The INDEX A100 and A200 allow turned parts to be completely finished on a single machine. The attachment of a loading magazine is, of course, also possible.



Technical data A100

Main spindle

Max. bar capacity	mm (inch)	42 (1.7)
Speed	rpm	7000
Power at 100%/40%	kW (hp)	16,5/19 (22/25.5)
Torque at 100%/40%	Nm (ft lbs)	32/43 (24/32)
Chuck diameter	mm (inch)	130 (5.1)
Spindle head ISO 702/1	size	A5
C axis resolution	degrees	0,001

Synchronous spindle

Chuck diameter	mm (inch)	95 (3.7)
----------------	-----------	----------

Tool carrier max.

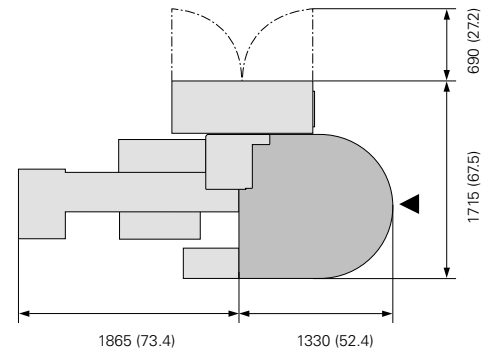
		4
Slide travel X	mm (inch)	62 (2.2)
Slide travel Z	mm (inch)	85 (3.3)

Weights and connecting power with max. configuration

Weight	kg (lbs)	2500 (5510)
Connected power		40 kW, 47 kVA, 68 A
Three-phase current		400 V, 50/60 Hz

Control

Siemens 840D solutionline



Technical data A200

Main spindle

Max. bar capacity	mm (inch)	65 (2.6)	90 (3.5)
Speed	rpm	5000	3500
Power at 100%/40%	kW (hp)	25/33 (33.5/44)	23/31 (31/41.5)
Torque at 100%/40%	Nm (ft lbs)	112/150 (83/111)	116/155 (86/114)
Chuck diameter	mm (inch)	160 (6.3)	-
Spindle head ISO 702/1	size	140 mm (5.5 inch)	A8
C axis resolution	degrees	0,001	0,001

Synchronous spindle

Chuck diameter	mm (inch)	130 (5.1)
----------------	-----------	-----------

Tool carrier max.

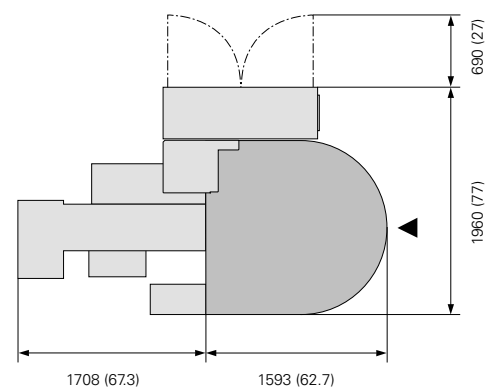
		4
Slide travel X	mm (inch)	72 (2.8)
Slide travel Z	mm (inch)	120 (4.7)

Weights and connecting power with max. configuration

Weight	kg (lbs)	4000 (8820)
Connected power		40 kW, 47 kVA, 68 A
Three-phase current		400 V, 50/60 Hz

Control

Siemens 840D solutionline



INDEX-Werke GmbH & Co. KG

Hahn & Tessky

Plochingen Straße 92
73730 Esslingen, Germany
Tel. +49 (711) 3191-0
Fax +49 (711) 3191-587
www.index-werke.de

INDEX Corporation

14700 North Point Boulevard
Noblesville, IN 46060, USA
Tel. +1 (317) 770-6300
Fax +1 (317) 770-3166
www.index-usa.com