

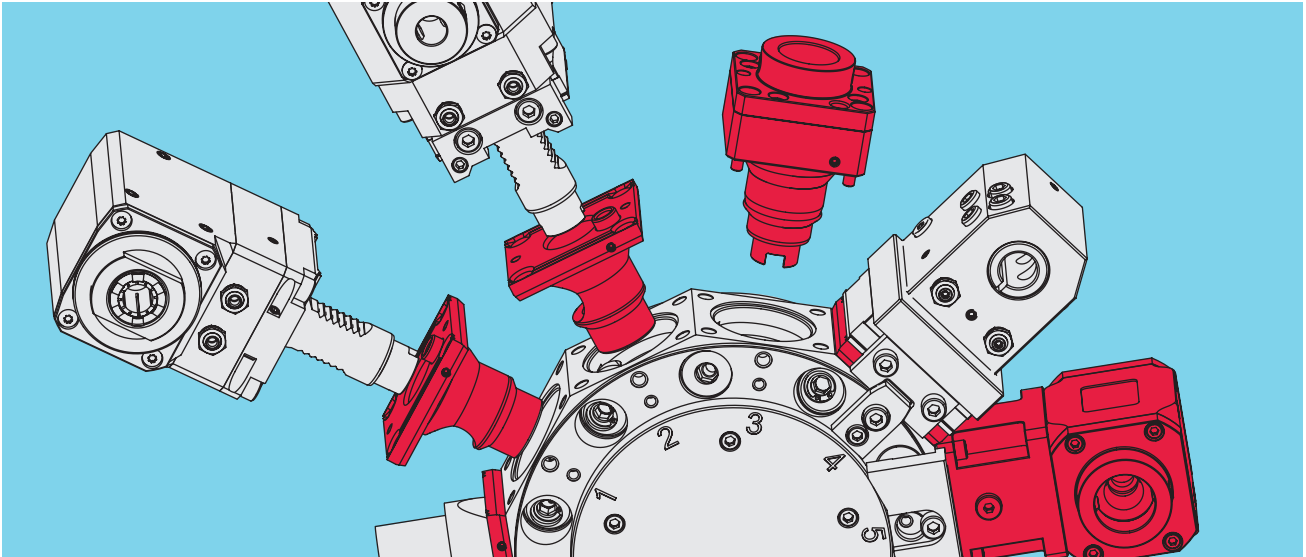
**INDEX**



## **Tool Holder TRAUB TNX65/42**

**UniFlex-Turret**

## Tool holder for UniFlex turret



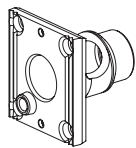
The UniFlex turret-combines proven design principles with the capabilities of modern tool holder systems.

### Advantages of the UniFlex turret

- **Ideal for all demanding milling operations.**  
The use of large bearings made possible by the design and the large distance between the bearings result in significantly higher stability and stiffness. This is even reinforced by the robust screw-connection of the tool holder with the turret.
- **More space in the work area due to a very low profile**
- **Extremely fast and flexible through the use of the WFB quick-change system**

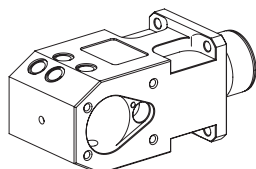
Another outstanding feature of the UniFlex turret is the ability to use existing VDI 30 tool holders. This requires only an adapter. The adapter is of course compatible with all our fixation systems – whether W-serration, TRAUB gib or V-gib. And should the adapter eventually exhibit signs of wear, you can easily replace it with a new one.

For more information, call us at +49-7153-502-9854 or visit our web site <http://infoshop.index-werke.de>



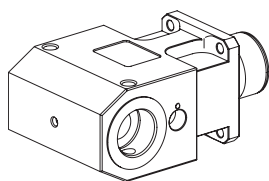
**479060 Adapter**  
**Tool mounting** VDI 30  
**Cooling** —  
**Speed ratio** —  
**Dimensions (X/Y/Z)** 10/—/— mm

6



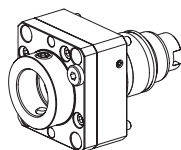
**W7590000 Drilling tool holder**  
**Tool mounting** DIN 1835 B/E D40  
**Cooling** EC/IC, Pmax=20 bar  
**Speed ratio** —  
**Dimensions (X/Y/Z)** 100/—/35 mm

7



**W7590001 Drill holder, double**  
**Tool mounting** WFB 32-20  
**Cooling** EC/IC, Pmax=20 bar  
**Speed ratio** —  
**Dimensions (X/Y/Z)** 100/—/50 mm

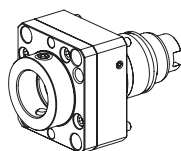
8



**W7595000 Drilling unit**

**Tool mounting** WFB 32-20  
**Cooling** IC, Pmax = 16 bar  
**Speed ratio** 1 (1:1)  
**Dimensions (X/Y/Z)** 53/—/— mm

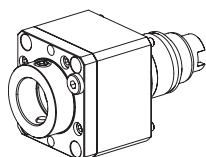
9



**W7595001 Drilling unit**

**Tool mounting** WFB 32-20  
**Cooling** EC/IC, Pmax=20 bar  
**Speed ratio** 1 (1:1)  
**Dimensions (X/Y/Z)** 53/—/— mm

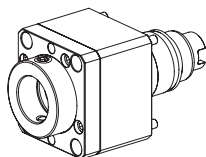
10



**W7595002 Milling unit**

**Tool mounting** WFB 32-20  
**Cooling** EC/IC, Pmax=20 bar  
**Speed ratio** 1 (1:1)  
**Dimensions (X/Y/Z)** 74/—/— mm

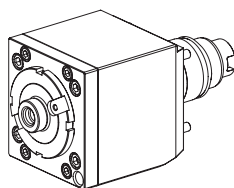
11



**W7595007 Milling unit, for heavy milling**

**Tool mounting** WFB 32-20  
**Cooling** EC/IC, Pmax=20 bar  
**Speed ratio** 1 (1:1)  
**Dimensions (X/Y/Z)** 74/—/— mm

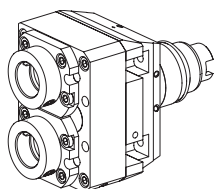
12



**W7595003 Milling unit**

**Tool mounting** Milling shaft D22  
**Cooling** EC/IC, Pmax=20 bar  
**Speed ratio** 4 (4:1)  
**Dimensions (X/Y/Z)** 93.5/—/— mm

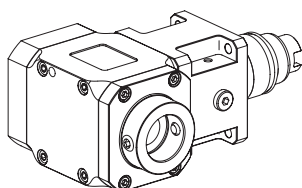
13



**W7595008 Milling unit, double**

**Tool mounting** WFB 24-16  
**Cooling** EC/IC, Pmax=80 bar  
**Speed ratio** 0.5 (1:2)  
**Dimensions (X/Y/Z)** 85/±25/— mm

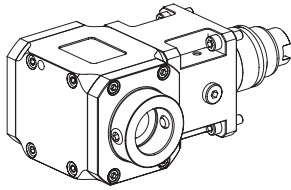
14



**W7595004 Milling unit**

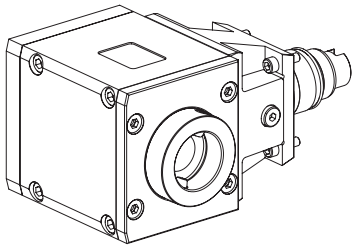
**Tool mounting** WFB 32-20  
**Cooling** EC/IC, Pmax=80 bar  
**Speed ratio** 1 (1:1)  
**Dimensions (X/Y/Z)** 95/—/65 mm

15



**W7595005**      **Milling unit**  
**Tool mounting**      WFB 32-20  
**Cooling**      EC/IC, Pmax=20 bar  
**Speed ratio**      1 (1:1)  
**Dimensions (X/Y/Z)**      95/—/65 mm

**Catalog page**  
**16**

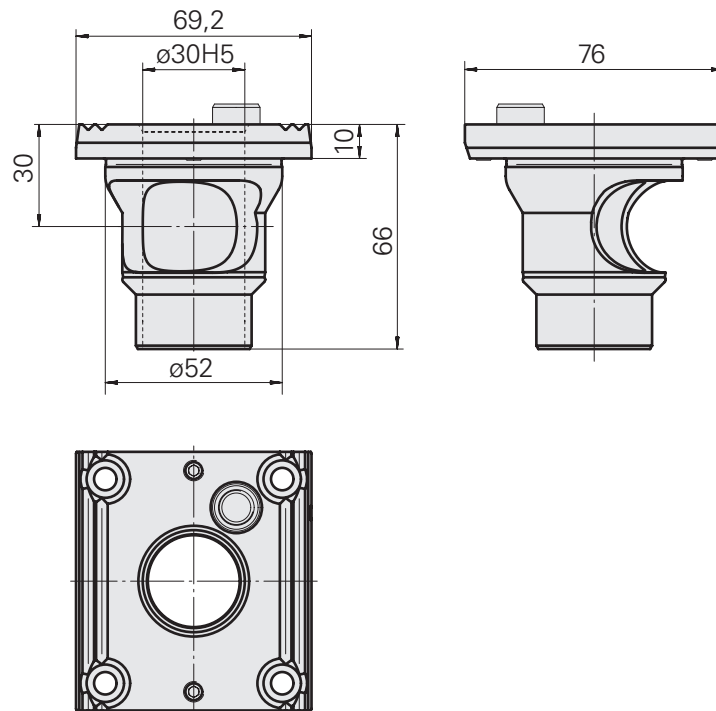


**W7595006**      **Milling unit**  
**Tool mounting**      WFB 40-25  
**Cooling**      EC/IC, Pmax=80 bar  
**Speed ratio**      2 (2:1)  
**Dimensions (X/Y/Z)**      110/—/70 mm

**17**

## Adapter

<b>Machine interface</b>	Compact shank 52
<b>Drive</b>	no drive
<b>Tool mounting</b>	VDI 30
<b>Cooling</b>	—
<b>Speed ratio</b>	—
<b>Reversing</b>	—
<b>180° turnable</b>	—
<b>Dimensions (X/Y/Z)</b>	10/—/— mm

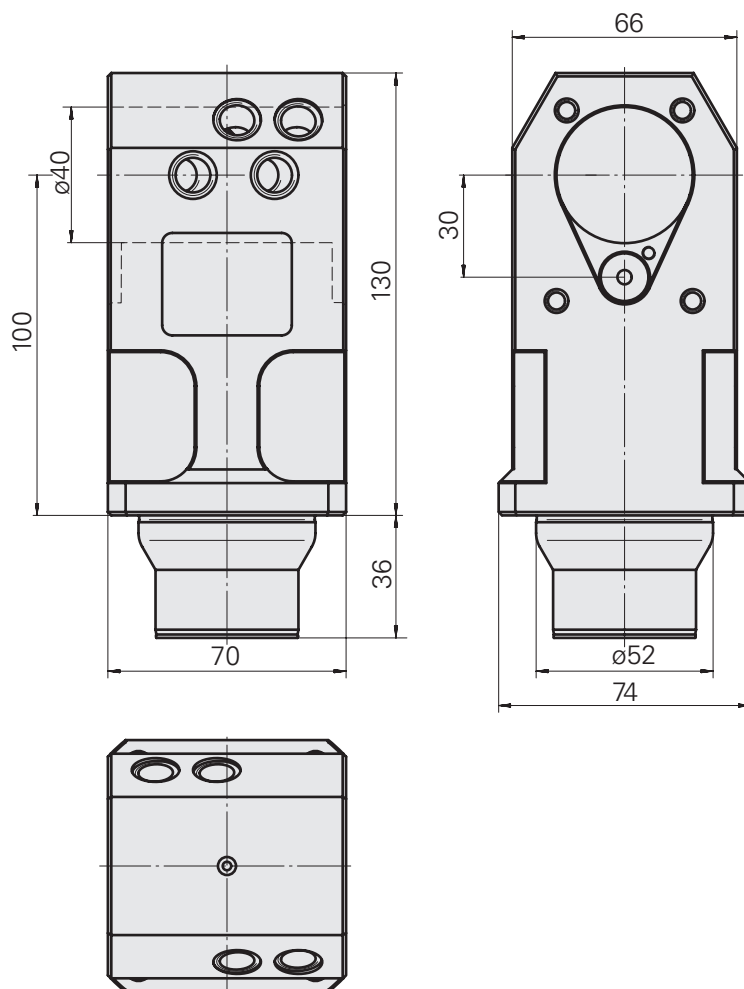


## Drilling tool holder

<b>Machine interface</b>	Compact shank 52
<b>Drive</b>	no drive
<b>Tool mounting</b>	DIN 1835 B/E D40
<b>Cooling</b>	EC/IC, Pmax=20 bar
<b>Speed ratio</b>	—
<b>Reversing</b>	—
<b>180° turnable</b>	yes
<b>Dimensions (X/Y/Z)</b>	100/—/35 mm

### Suitable accessories

Mounting sleeve	W64222.41--
Mounting sleeve	W64220.02--
Mounting sleeve	W64221.14--

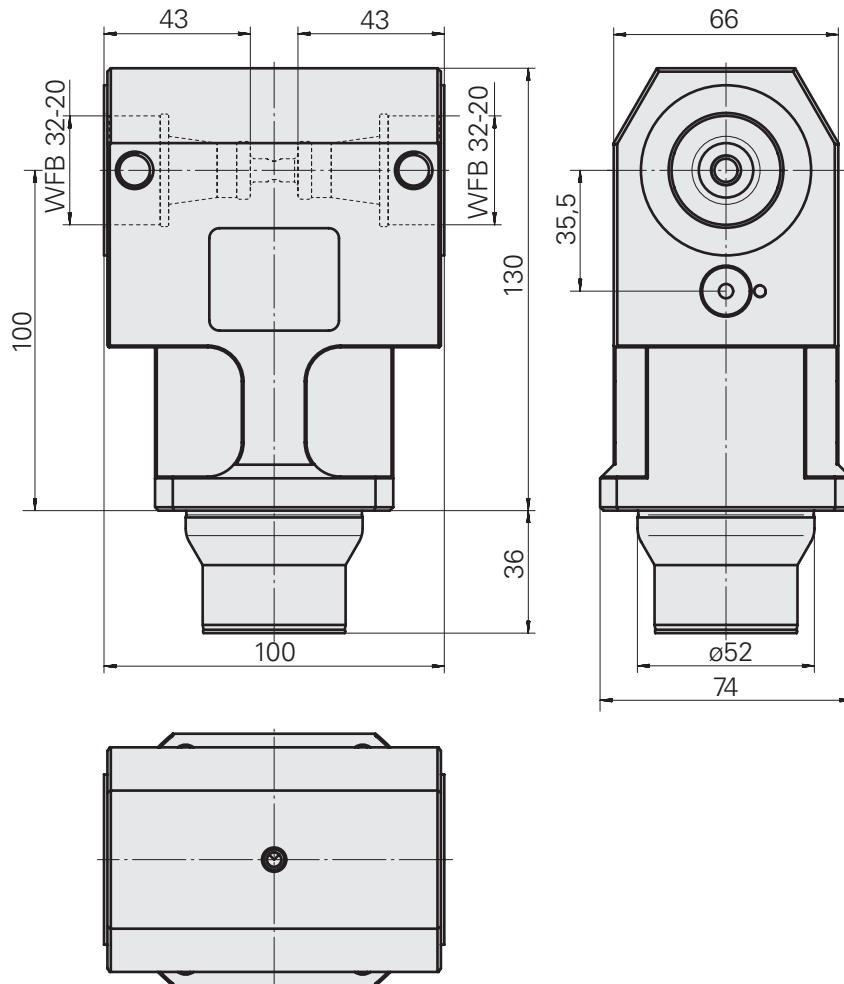


**Drill holder, double**

<b>Machine interface</b>	Compact shank 52
<b>Drive</b>	no drive
<b>Tool mounting</b>	WFB 32-20
<b>Cooling</b>	EC/IC, Pmax=20 bar
<b>Speed ratio</b>	—
<b>Reversing</b>	—
<b>180° turnable</b>	yes
<b>Dimensions (X/Y/Z)</b>	100/—/50 mm

**Suitable accessories**

WFB with shrink mounting	WZ9990.3206F
WFB with Weldon mounting	WZ9990.3207F
WFB with collet mounting	WZ9990.3208F
WFB with mill arbor mounting	WZ9990.3209F
WFB with hydraulic expansion mounting	WZ9990.3210F
WFB other mountings	WZ9990.3200F

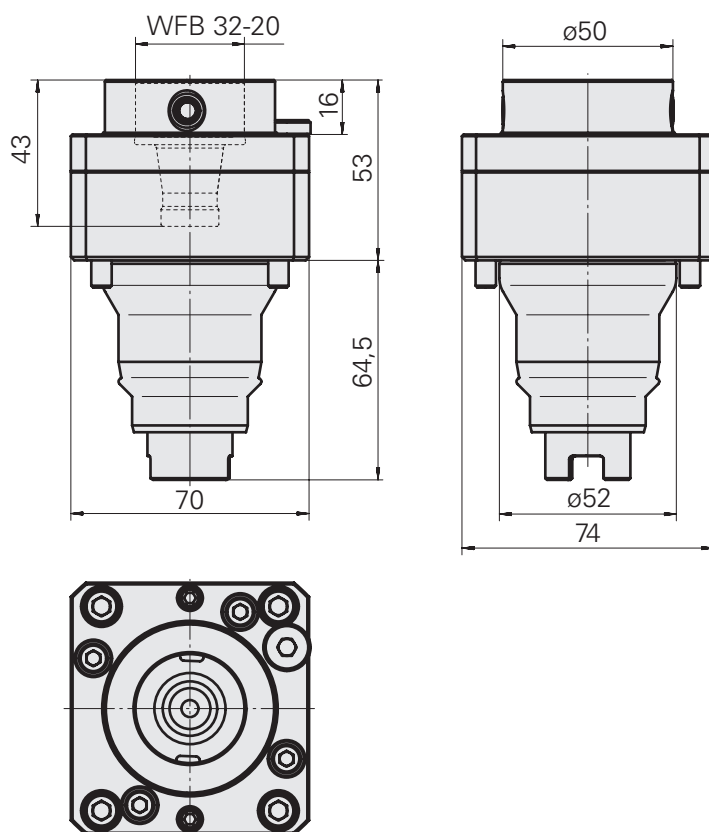


## Drilling unit

<b>Machine interface</b>	Compact shank 52
<b>Drive</b>	Claw coupling
<b>Tool mounting</b>	WFB 32-20
<b>Cooling</b>	IC, Pmax = 16 bar
<b>Speed ratio</b>	1 (1:1)
<b>Reversing</b>	no
<b>180° turnable</b>	yes
<b>Dimensions (X/Y/Z)</b>	53/—/— mm

### Suitable accessories

WFB with shrink mounting	WZ9990.3206F
WFB with Weldon mounting	WZ9990.3207F
WFB with collet mounting	WZ9990.3208F
WFB with mill arbor mounting	WZ9990.3209F
WFB with hydraulic expansion mounting	WZ9990.3210F
WFB other mountings	WZ9990.3200F

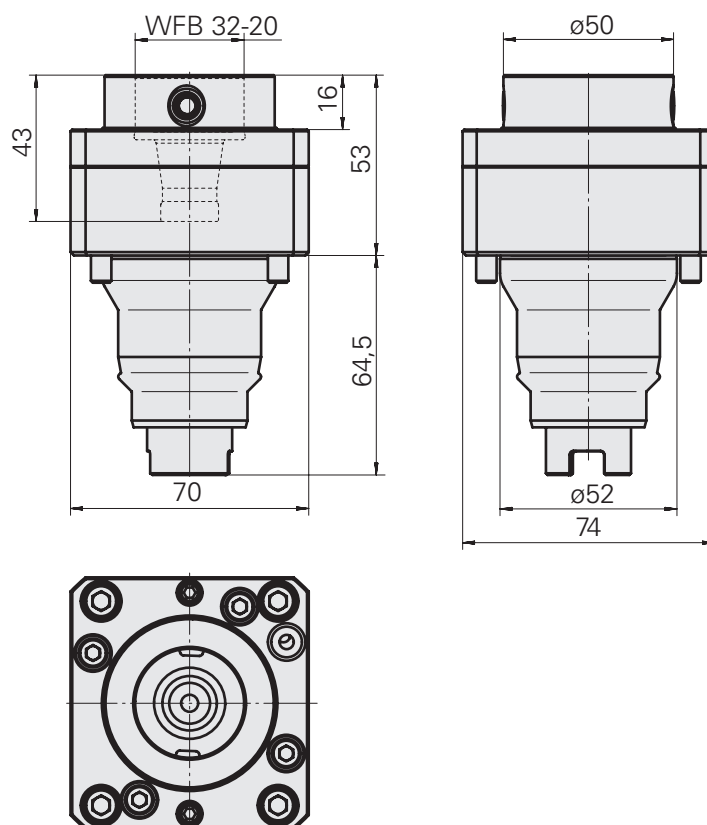


## Drilling unit

<b>Machine interface</b>	Compact shank 52
<b>Drive</b>	Claw coupling
<b>Tool mounting</b>	WFB 32-20
<b>Cooling</b>	EC/IC, Pmax=20 bar
<b>Speed ratio</b>	1 (1:1)
<b>Reversing</b>	no
<b>180° turnable</b>	yes
<b>Dimensions (X/Y/Z)</b>	53/—/— mm

### Suitable accessories

WFB with shrink mounting	WZ9990.3206F
WFB with Weldon mounting	WZ9990.3207F
WFB with collet mounting	WZ9990.3208F
WFB with mill arbor mounting	WZ9990.3209F
WFB with hydraulic expansion mounting	WZ9990.3210F
WFB other mountings	WZ9990.3200F

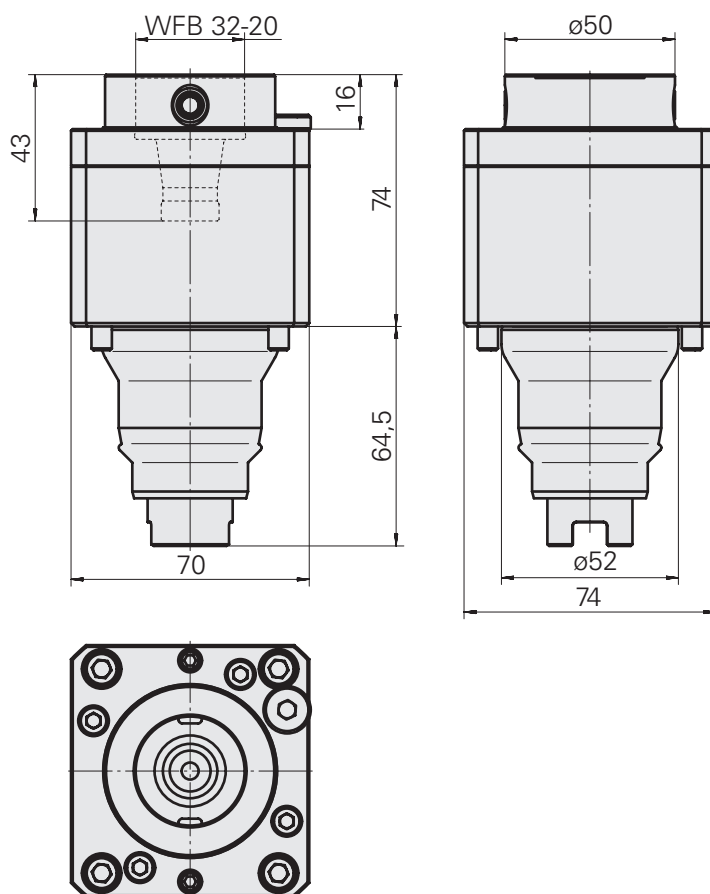


## Milling unit

<b>Machine interface</b>	Compact shank 52
<b>Drive</b>	Claw coupling
<b>Tool mounting</b>	WFB 32-20
<b>Cooling</b>	EC/IC, Pmax=20 bar
<b>Speed ratio</b>	1 (1:1)
<b>Reversing</b>	no
<b>180° turnable</b>	yes
<b>Dimensions (X/Y/Z)</b>	74/—/— mm

### Suitable accessories

WFB with shrink mounting	WZ9990.3206F
WFB with Weldon mounting	WZ9990.3207F
WFB with collet mounting	WZ9990.3208F
WFB with mill arbor mounting	WZ9990.3209F
WFB with hydraulic expansion mounting	WZ9990.3210F
WFB other mountings	WZ9990.3200F

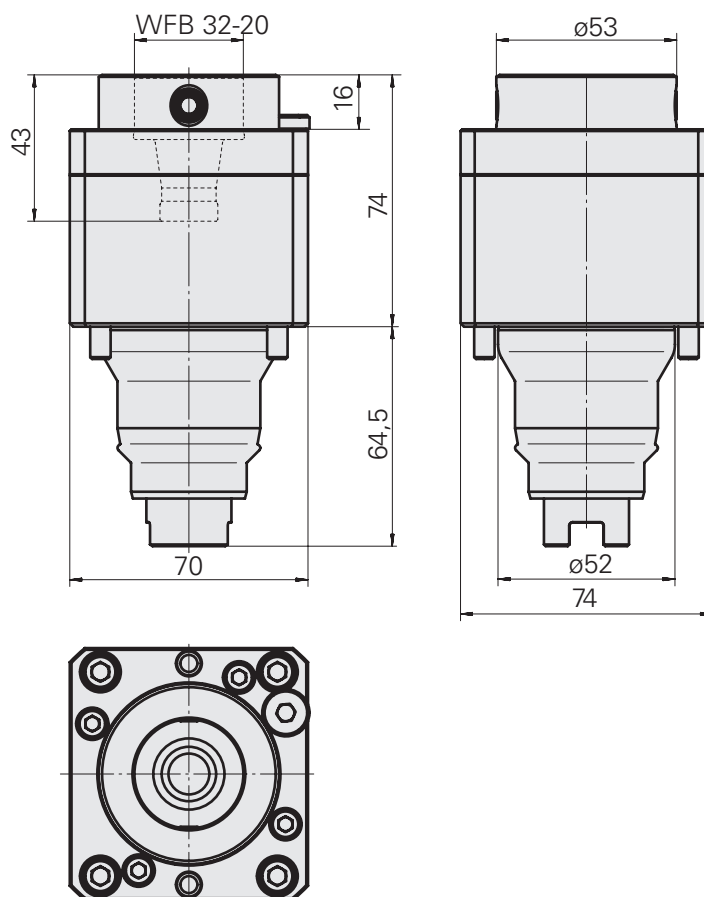



**Milling unit, for heavy milling**

<b>Machine interface</b>	Compact shank 52
<b>Drive</b>	Claw coupling
<b>Tool mounting</b>	WFB 32-20
<b>Cooling</b>	EC/IC, Pmax=20 bar
<b>Speed ratio</b>	1 (1:1)
<b>Reversing</b>	no
<b>180° turnable</b>	yes
<b>Dimensions (X/Y/Z)</b>	74/—/— mm

**Suitable accessories**

WFB with shrink mounting	WZ9990.3206F
WFB with Weldon mounting	WZ9990.3207F
WFB with collet mounting	WZ9990.3208F
WFB with mill arbor mounting	WZ9990.3209F
WFB with hydraulic expansion mounting	WZ9990.3210F
WFB other mountings	WZ9990.3200F



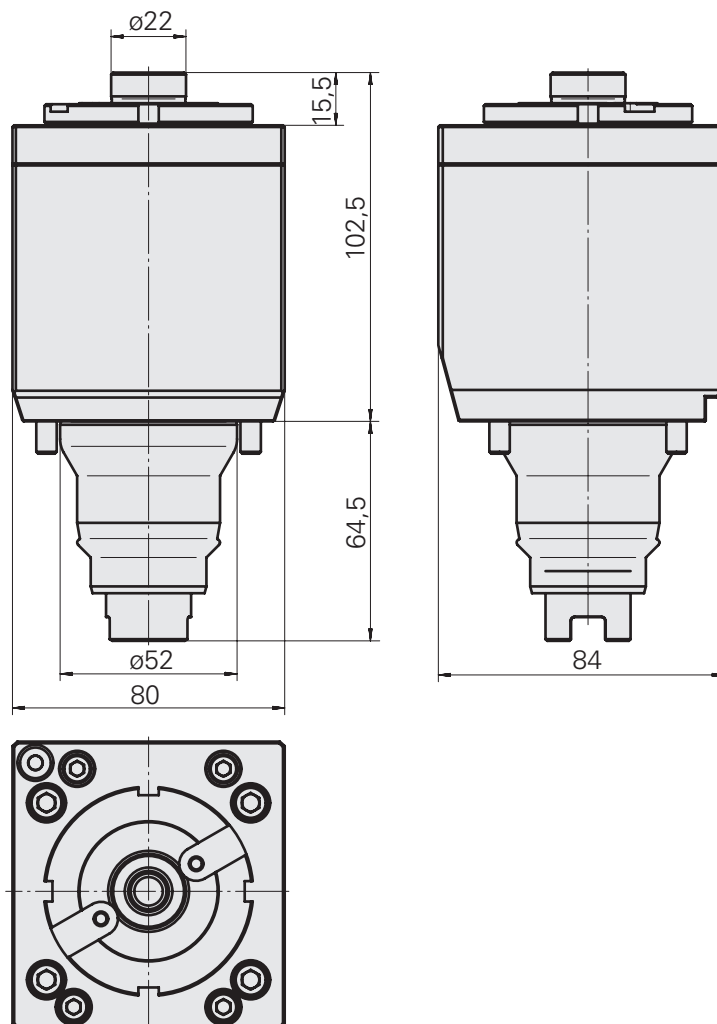
 Max. speed 4000 rpm!

## Milling unit

<b>Machine interface</b>	Compact shank 52
<b>Drive</b>	Claw coupling
<b>Tool mounting</b>	Milling shaft D22
<b>Cooling</b>	EC/IC, Pmax=20 bar
<b>Speed ratio</b>	4 (4:1)
<b>Reversing</b>	no
<b>180° turnable</b>	yes
<b>Dimensions (X/Y/Z)</b>	93.5/—/— mm

### Suitable accessories

Rings	251390.----
Rings	251391.----
Cutter tightening bolt	250122.1028
Milling arbor wrench	203020.1220
Hook wrench	490340.0590

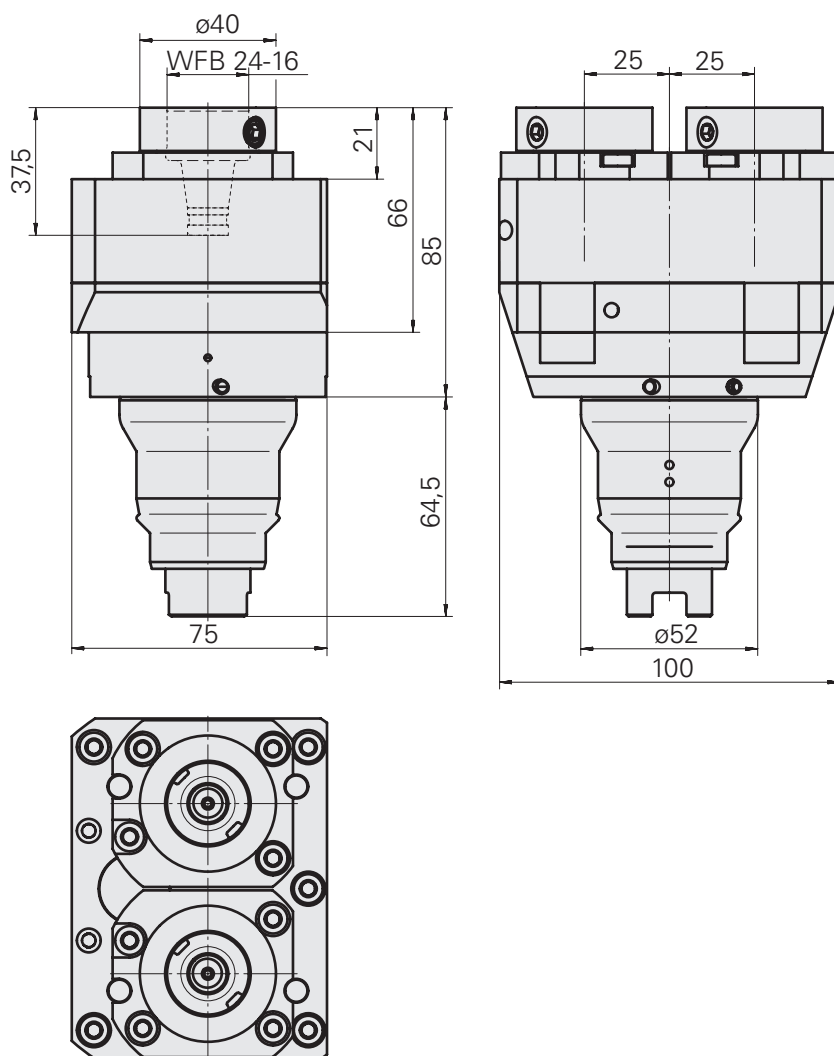


## Milling unit, double

<b>Machine interface</b>	Compact shank 52
<b>Drive</b>	Claw coupling
<b>Tool mounting</b>	WFB 24-16
<b>Cooling</b>	EC/IC, Pmax=80 bar
<b>Speed ratio</b>	0.5 (1:2)
<b>Reversing</b>	no
<b>180° turnable</b>	yes
<b>Dimensions (X/Y/Z)</b>	85/±25/— mm

### Suitable accessories

WFB with shrink mounting	WZ9990.2406F
WFB with Weldon mounting	WZ9990.2407F
WFB with collet mounting	WZ9990.2408F
WFB other mountings	WZ9990.2499F

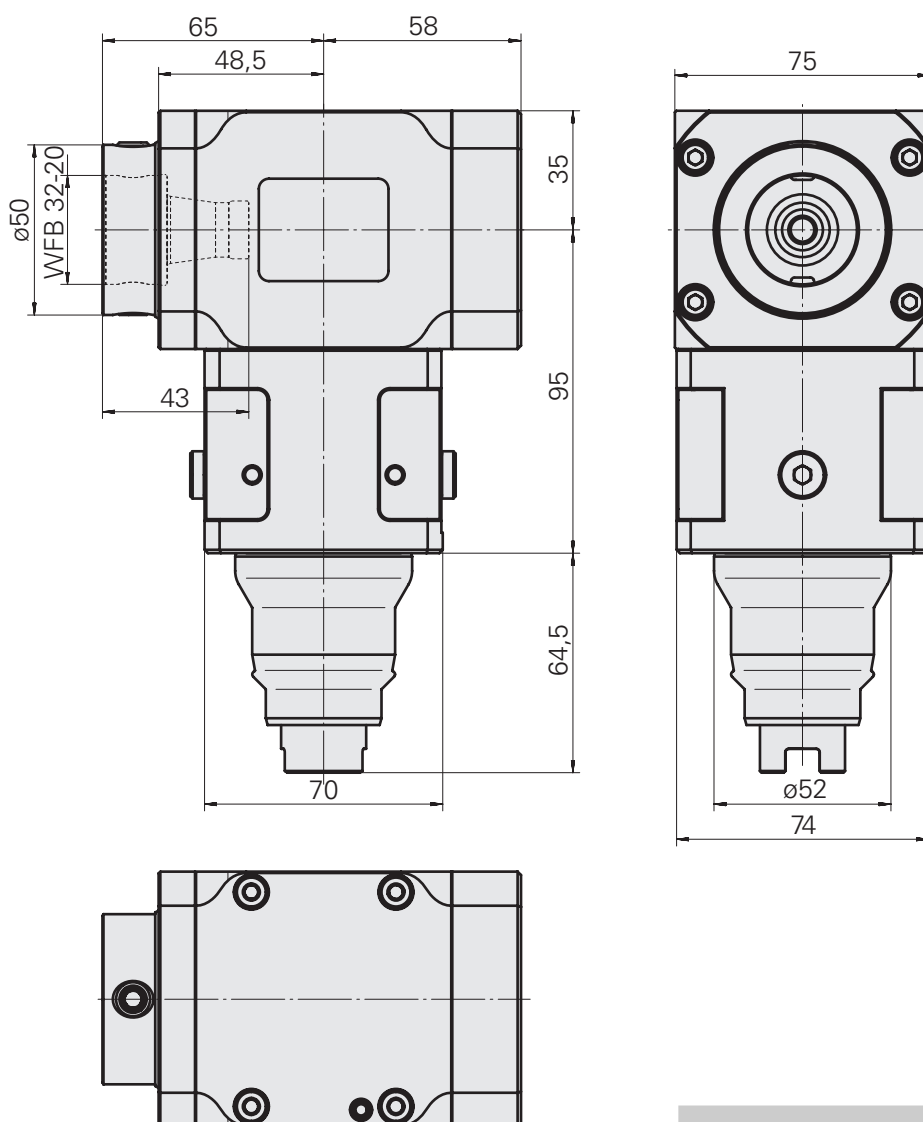



## Milling unit

<b>Machine interface</b>	Compact shank 52
<b>Drive</b>	Claw coupling
<b>Tool mounting</b>	WFB 32-20
<b>Cooling</b>	EC/IC, Pmax=80 bar
<b>Speed ratio</b>	1 (1:1)
<b>Reversing</b>	no
<b>180° turnable</b>	yes
<b>Dimensions (X/Y/Z)</b>	95/—/65 mm

### Suitable accessories

WFB with shrink mounting	WZ9990.3206F
WFB with Weldon mounting	WZ9990.3207F
WFB with collet mounting	WZ9990.3208F
WFB with mill arbor mounting	WZ9990.3209F
WFB with hydraulic expansion mounting	WZ9990.3210F
WFB other mountings	WZ9990.3200F



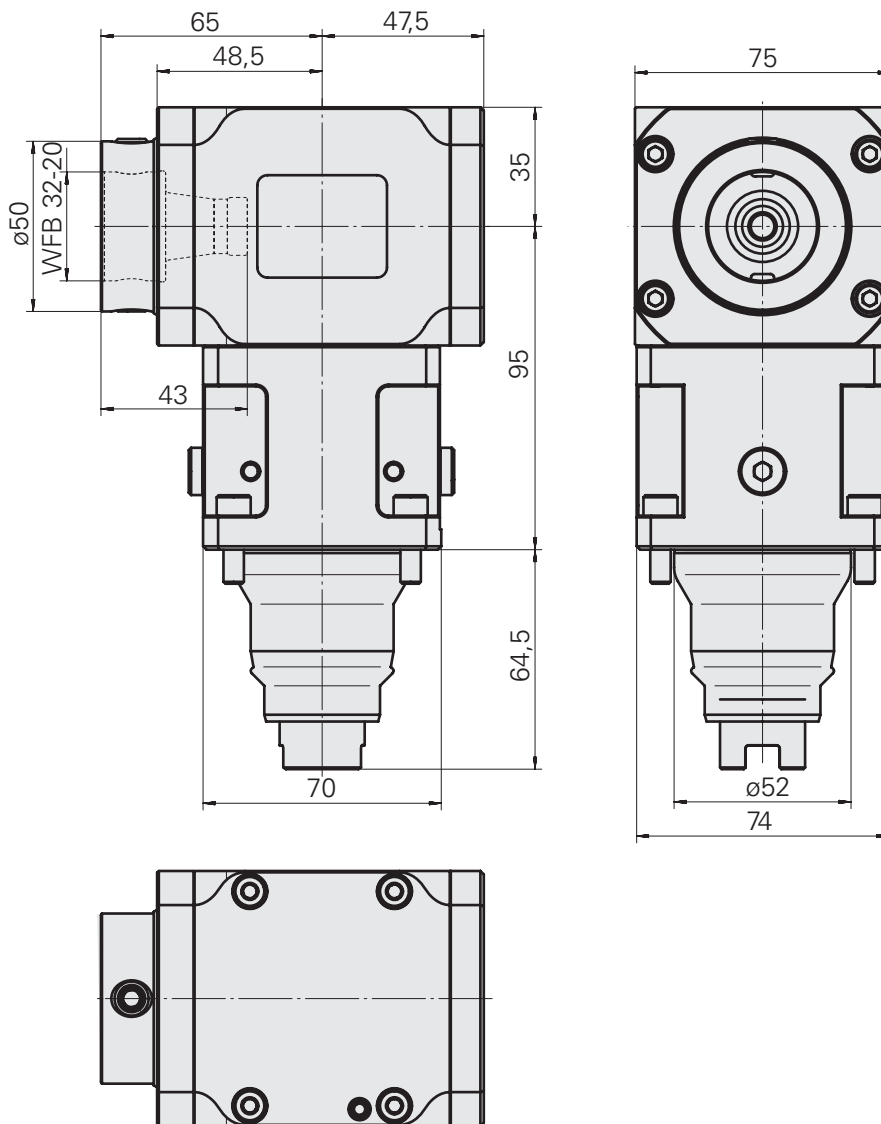
 No dry-run!

## Milling unit

<b>Machine interface</b>	Compact shank 52
<b>Drive</b>	Claw coupling
<b>Tool mounting</b>	WFB 32-20
<b>Cooling</b>	EC/IC, Pmax=20 bar
<b>Speed ratio</b>	1 (1:1)
<b>Reversing</b>	no
<b>180° turnable</b>	yes
<b>Dimensions (X/Y/Z)</b>	95/—/65 mm

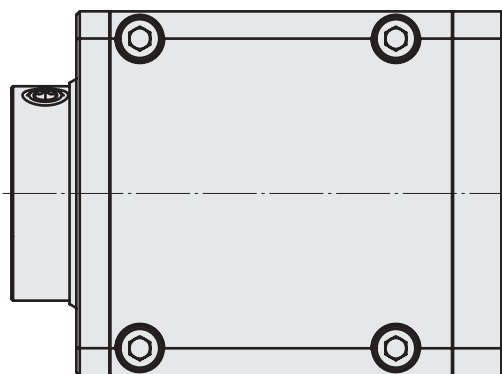
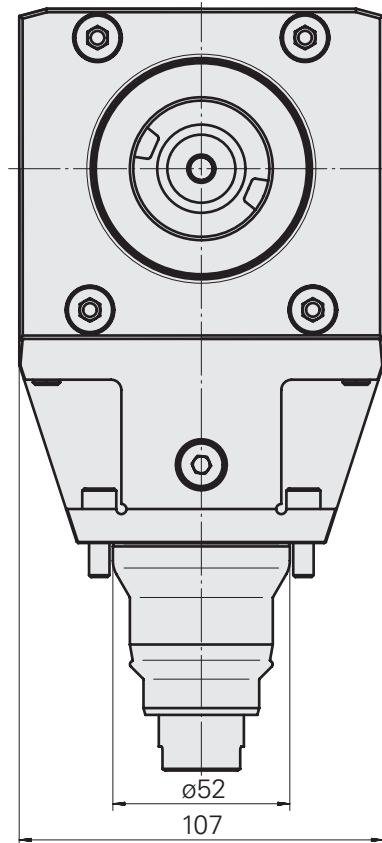
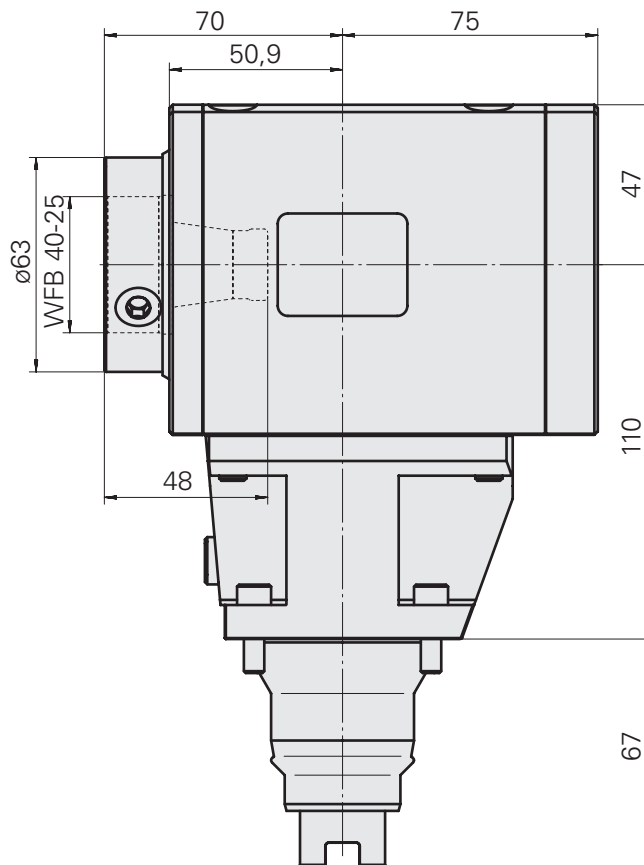
### Suitable accessories


WFB with shrink mounting	WZ9990.3206F
WFB with Weldon mounting	WZ9990.3207F
WFB with collet mounting	WZ9990.3208F
WFB with mill arbor mounting	WZ9990.3209F
WFB with hydraulic expansion mounting	WZ9990.3210F
WFB other mountings	WZ9990.3200F



## Milling unit

<b>Machine interface</b>	Compact shank 52
<b>Drive</b>	Claw coupling
<b>Tool mounting</b>	WFB 40-25
<b>Cooling</b>	EC/IC, Pmax=80 bar
<b>Speed ratio</b>	2 (2:1)
<b>Reversing</b>	no
<b>180° turnable</b>	yes
<b>Dimensions (X/Y/Z)</b>	110/—/70 mm



 No dry-run!





# INDEX



**INDEX-Werke GmbH & Co. KG  
Hahn & Tessky**

Plochinger Straße 92  
D-73730 Esslingen  
[www.index-werke.de](http://www.index-werke.de)

**TECHNICAL ADVICE**

Telefon (0711) 3191-9854  
Telefax (0711) 90129-343  
[werkzeughalter@index-werke.de](mailto:werkzeughalter@index-werke.de)

**SPARE PARTS**

Telefon (0711) 3191-260  
Telefax (0711) 3191-790  
[ersatzteile@index-werke.de](mailto:ersatzteile@index-werke.de)

**TRAUB-Drehmaschinen  
GmbH & Co. KG**

Hauffstraße 4  
D-73262 Reichenbach  
[www.traub.de](http://www.traub.de)

**TECHNICAL ADVICE**

Telefon (07153) 502-9854  
Telefax (0711) 90129-343  
[werkzeughalter@traub.de](mailto:werkzeughalter@traub.de)

**SPARE PARTS**

Telefon (07153) 502-600  
Telefax (07153) 502-685  
[ersatzteile@traub.de](mailto:ersatzteile@traub.de)